

Welcome
To The World Of **Worthfulness**



Worthfulness

Worthfulness is more than the measure of value, it's the measure of significance. Sometimes, worthfulness can be aesthetics, sometimes a lush location and other times an unimpeachable quality achieved through years of meticulous excellence. But once in a while, there comes something significant. Something so worthwhile that it can transform the legacy of Panchavati and Law Garden. **This is the story of Majestic.**

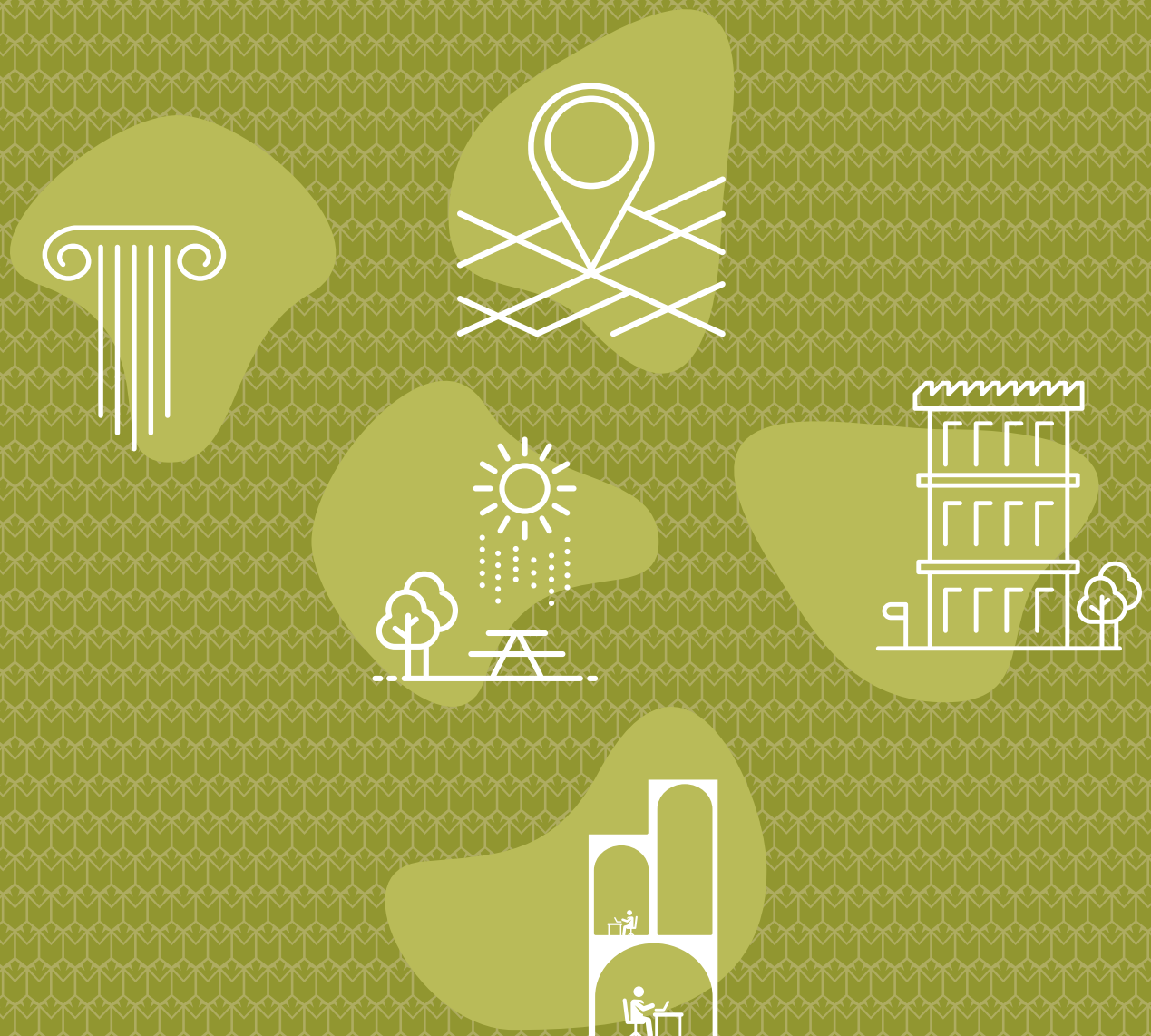


Artistic Impression - Elevation



OFFICES
743 Sq. Ft. onwards

SHOWROOMS
1766 Sq. Ft. onwards



Elements Of A Majestic Experience

 **LOCATION**

 **DESIGN**

 **ELEVATION**

 **SUSTAINABILITY**

 **AMBIENCE**

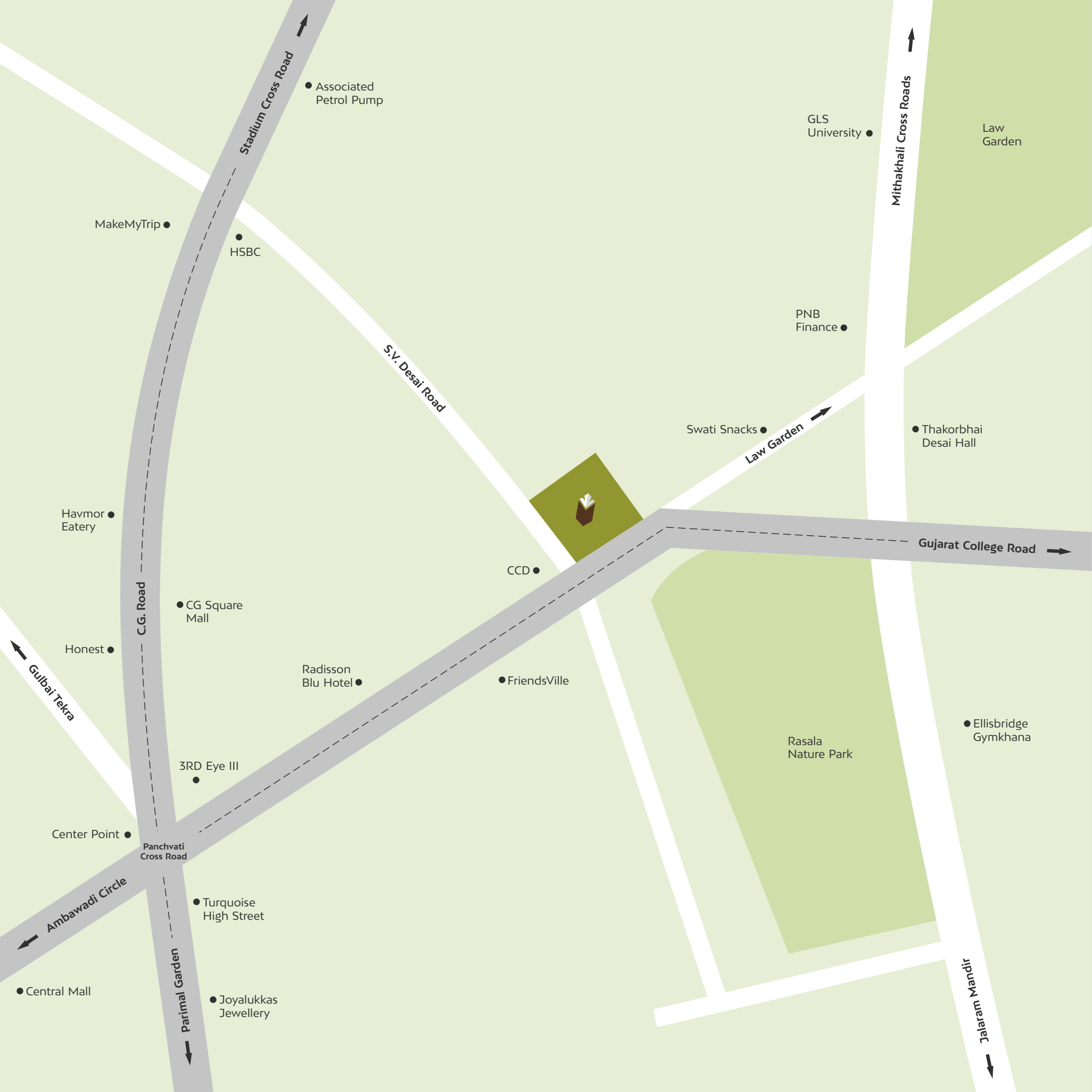


Artistic Impression - Revovation



Location Worthy Of An Investment

Majestic is located in the close vicinity of the pristine Law Garden, where Ahmedabad's who's who congregate. A place where the commute is so convenient that it ensures your business will never get stuck in a jam. In the heart of the city where all the streams of commerce meet is an enviable location to own a business in. This right here is a place that will take your business to unseen heights. **A worthwhile investment for you.**



Neighbourhood

Majestic is located in the heart of the city at a walking distance from C.G. Road. Closely connected to Western Ahmedabad and a few kilometers away from the Airport and Railway Station, it is the most convenient business location for you and your visitors. As an added advantage, Majestic is surrounded by malls, multiplexes and gardens.

- Associated Petrol Pump
- MakeMyTrip ●
- HSBC
- Havmor Eatery ●
- Honest ●
- Center Point ●
- Central Mall ●
- Joyalukkas Jewellery ●
- CG Square Mall ●
- Radisson Blu Hotel ●
- FriendsVille ●
- Turquoise High Street ●
- 3RD Eye III ●
- Panchvati Cross Road ●
- CCD ●
- Swati Snacks ●
- PNB Finance ●
- Thakorbhai Desai Hall ●
- Ellisbridge Gymkhana ●

GLS University ●

Law Garden

Swati Snacks ●

Thakorbhai Desai Hall ●

Gujarat College Road →

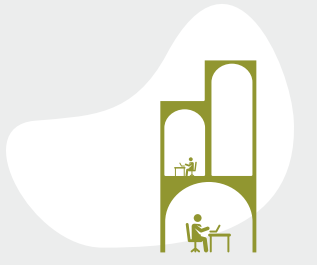
Rasala Nature Park

Ellisbridge Gymkhana ●

Jalaram Mandir



Artistic Impression - Office Space



Design Worthy Of Your Convenience

Majestic offers not only a big space to your dreams but also to the benefits that come with it. Having a clear grid layout, optimum sized workspaces and a multilevel basement, it ensures that nothing comes before your comfort. Because sometimes the extra care that we put into making your life easier isn't just a reflection of our commitment to excellence, it reflects our desire to create the best experience. **A worthwhile convenience for you.**

TOWARDS CG ROAD

30 FT. ROAD

20 FT. WIDE RAMP

- 06 1875 SQ.FT. 15'3" X 73'3"
- 05 1825 SQ.FT. 14'3" X 74'3"
- 04 1870 SQ.FT. 14'3" X 76'0"
- 03 1910 SQ.FT. 14'3" X 77'9"
- 02 2130 SQ.FT. 14'3" X 87'3"
- 01 1930 SQ.FT. 14'3" X 89'0"

LIFT 3 LIFT 4 SERVICE LIFT 5

OFFICE FOYER

SHOWROOM FOYER

LIFT 2 LIFT 1

INTERNAL ROAD



TOWARDS CG ROAD

100 FT. ROAD

TOWARDS LAW GARDEN

Ground Floor Plan

TOWARDS CG ROAD

30 FT. ROAD

20 FT. WIDE RAMP

- 06 2109 SQ.FT. 15'3" X 80'9"
- 05 1766 SQ.FT. 14'3" X 72'0"
- 04 1808 SQ.FT. 14'3" X 73'9"
- 03 1850 SQ.FT. 14'3" X 74'9"
- 02 1892 SQ.FT. 14'3" X 77'3"
- 01 2422 SQ.FT. 14'3" X 78'9"

LIFT 3 LIFT 4 SERVICE LIFT 5

LIFT 2 LIFT 1

10 FT. WIDE PASSAGE

DISPLAY AREA

INTERNAL ROAD



TOWARDS CG ROAD

100 FT. ROAD

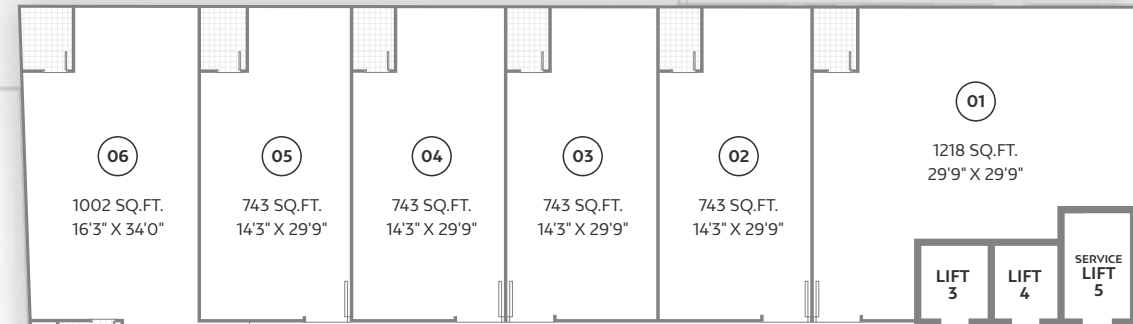
TOWARDS LAW GARDEN

1st to 3rd Floor Plan

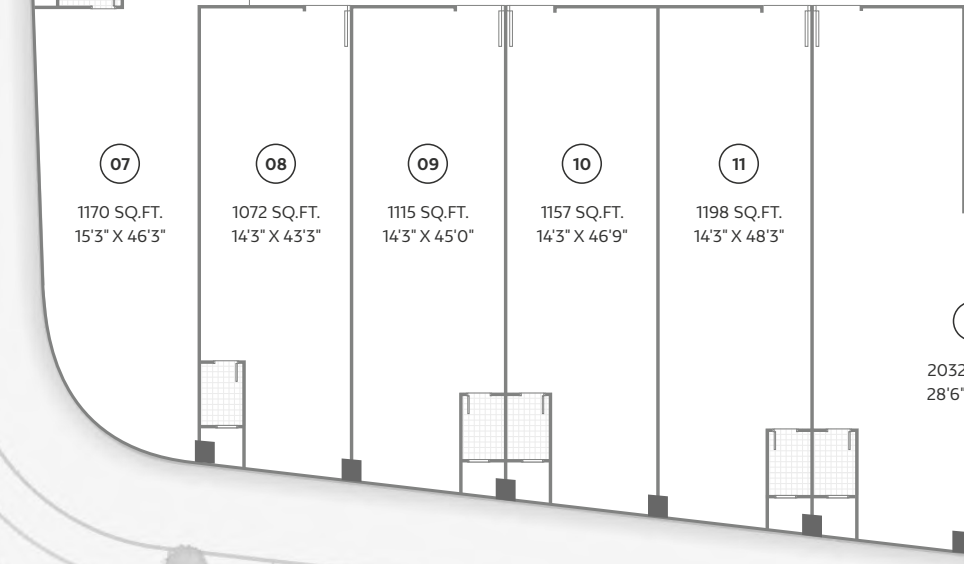
TOWARDS CG ROAD

30 FT. ROAD

20 FT. WIDE RAMP



8 FT. WIDE PASSAGE



INTERNAL ROAD



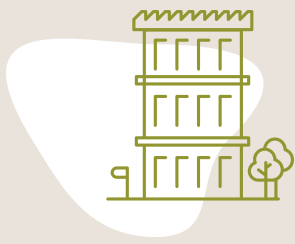
TOWARDS CG ROAD

100 FT. ROAD

TOWARDS LAW GARDEN

Architecture

The impressive design and finely finished architecture of Majestic makes it more spacious and unique among the commercial buildings around it. With 5 elevators (2 for showrooms + 2 for offices + 1 service lift) it exemplifies the meaning of convenience. An added feature for the 1st, 2nd and 3rd floor showrooms is the extra display space in the front for their business and products. The ample natural light and airy spaces create a more sustainable environment.



Elevation Worthy Of Your Reputation

The marvellous facade of Majestic boasts the unique D&C design that adds to the aesthetics of the building and makes it energy efficient as well. A treat for the eyes, this is a space that complements the status of your business and attracts clients and their admiration. Because great things deserve to look good and so will your business at Majestic. **A worthwhile elevation for you.**



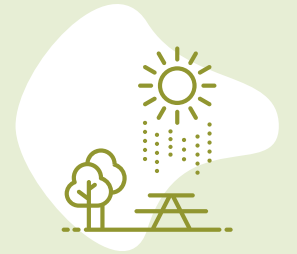
Artistic Impression - Elevation

Exterior

The seven-storey building is framed in an Arc-like shapes to make it more unique and energy-efficient. The arc shape also gives a touch of sophistication and creativity to the building that grabs eyeballs. Its unique elevation near C.G Road will also help in attracting more clients and visitors.



Artistic Impression - Facade

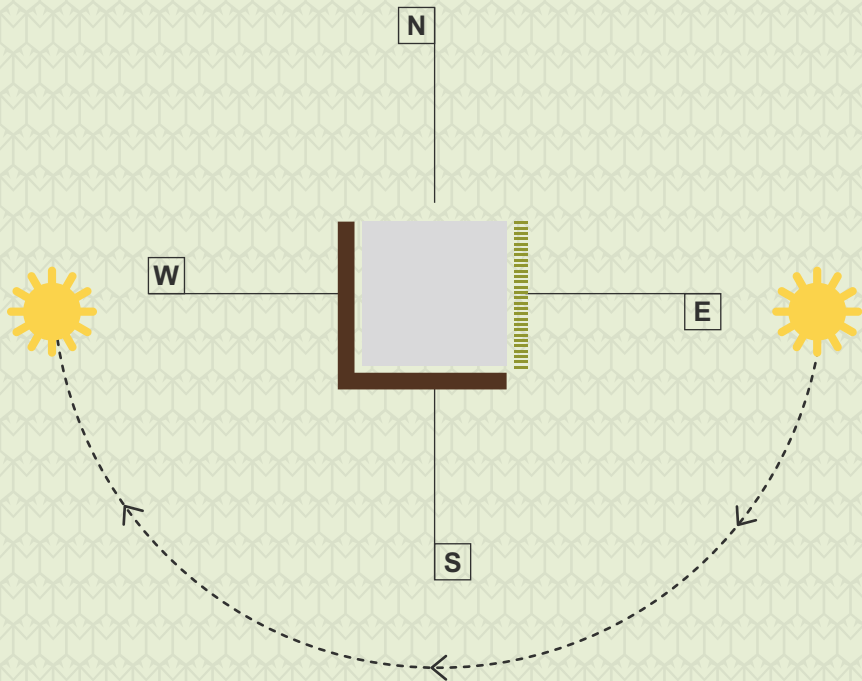


Sustainability

Worthy
Of The
Environment

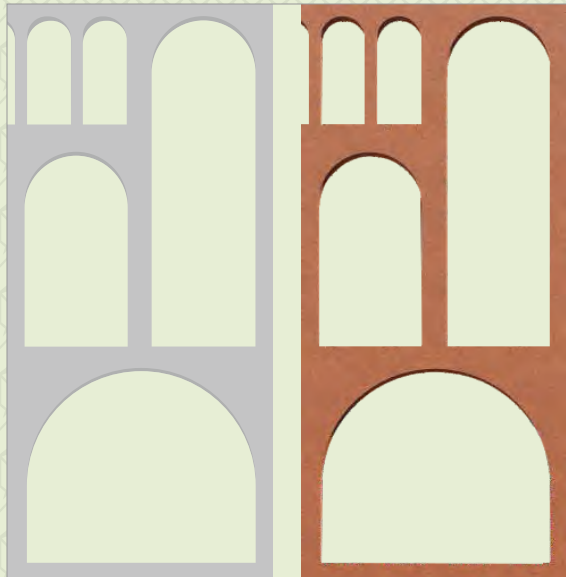
Majestic incorporates sustainability through thoughtful designs executed with architectural fluency. The interior and facade is crafted to allow ample natural light and air making it not only environmentally conscious but also energy efficient. At a time when the grind of our routine is taking us farther away from nature, here is a structure that takes us closer to it. **A worthwhile sustainability for you and the environment.**

Building Envelope For All Weather Offices

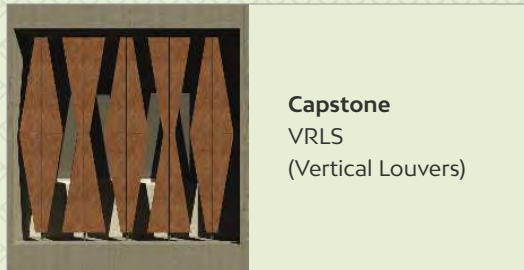


- Sun path diagram tells you how the sun will impact the building throughout the year.
- Our buildings are designed keeping this in mind to ensure that the harshness and heat of sun is minimized and office spaces remain weather friendly.
- Our previous projects are a testimony of this thought process.

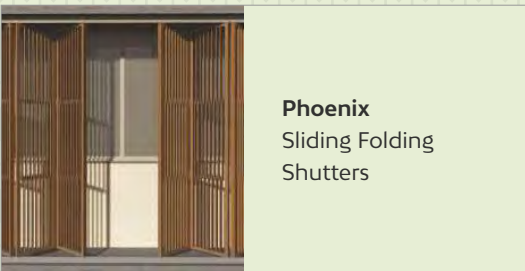
Introducing A Unique Façade Element



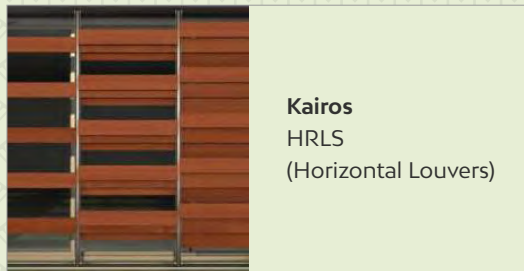
Dynasty
S.L.I.D.E.
(Sun-Control Louvers)



Capstone
VRLS
(Vertical Louvers)



Phoenix
Sliding Folding
Shutters



Kairos
HRLS
(Horizontal Louvers)

Façade

The grand facade of Majestic makes it look posh and elevates the impression of your business. Beyond the grandeur, we've also taken care of the functionalities, long term maintenance and heat control parameters. Majestic has a Cavity Wall System which enhances the beauty of showrooms & offices and gives a remarkable appearance to the entire building.



Ambience Worthy Of Your Leisure

The grand foyer, picturesque rooftop, designer passages and plush interiors of Majestic not only provide a premium touch but also create a much needed tranquil atmosphere. Its interiors ensure that as soon as you step inside, you leave behind the bustle of the city and feel uplifted by the aura of the design. Majestic offers an exclusive rooftop design which will make your visitors say 'WOW', and along with the sophistication, it also gives a posh look to your business. **A worthwhile ambience for you.**





Foyer

A modern ambience and facilities add a lot of value to your business and investment, especially if that is the first thing your client sees like our aesthetically designed grand foyer. Majestic is a magnificent business space that offers a leisurely serenity that makes sure you're always performing at your peak.

Salient Features

Feel Secure At CCTV Enabled Premise That Ensures Safety & Security.

Get Hassle Free Stack Parking Facility In Basement.

Generator Backup For Elevators, Foyer And Common Utilities.

Allied Services At The Manager's Desk.

Material Unloading Deck For Logistical Support.

Solar Panels For Common Area Lighting.



Earthquake Resistant RCC Structure

Quality Flooring

5 High End Elevators

Personal Toilet For Each Office

Separate Ducts For Electrification & AC

24 HRS Water & Electric Supply



Utilities

Majestic brings you the elegance and sophistication that uplifts your business standards. It provides essential amenities, features and facilities that every entrepreneur wishes to include in their workspace.

Our Landmark Projects



MEGHDHANUSH

3 & 4 BHK Apartments &
Retail Spaces
@ Vastrapur, Ahmedabad.



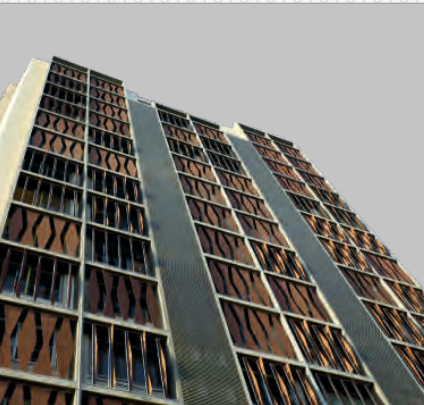
DYNASTY

Premium Offices & Showrooms
@ C.G. Road, Ahmedabad.



PHOENIX

Premium Offices & Showrooms
@ Vijay Cross Roads, Ahmedabad.



CAPSTONE

Premium Offices & Showrooms
@ Parimal Garden, Ahmedabad.



KAIROS

Premium Offices & Showrooms
@ Drive In Road, Ahmedabad.



UNICO

3 BHK Luxurious Apartments
@ Naranpura, Ahmedabad.



PRATHAM

2-3 BHK Luxurious Apartments
@ Gurukul, Ahmedabad.

10 YEARS OF EXCELLENCE

With more than 10 Years of Experience - We, D & C Developers and Azaro Group, are one of the most prestigious real estate companies of Ahmedabad. We are known for Landmark Buildings, Iconic Designs, Customer Centricity & Trustworthiness.

Over the last 10 years, we are creating quality living and commercial spaces. We build projects that have classy appeal, are of practical usage and provide value for money.

D & C Developers and Azaro Group - Your Partners In Fine Creations.



www.dandc.in

CALL: +91 90162 90162
98799 17969, 98247 43539

SITE ADDRESS: Majestic, Near Swati Snacks, Opp. Café Coffee Day,
Law garden, Ellisbridge, Ahmedabad - 380 006

ARCHITECT: Pratik Soni, Dilip Soni Architects

STRUCTURAL ENGINEER: Siddharth Desai, Sarjan Consultant

FACADE CONCEPT: Kinny Soni, Pratik Soni, Ujjwal Panchal

3D VISUALS: Impact 3D, Ahmedabad

DESIGNED BY: Rioconn Interactive Pvt. Ltd

CHARTERED ACCOUNTANTS: Manubhai & Shah LLP

LEGAL ADVISORS: H. Desai & Co, AC Damani & Co

LIAISONING CONSULTANT: NRM Synergy

RERA: PR/GJ/AHMEDABAD/AHMEDABAD CITY/AUDA/CAA05182/010419 | WWW.GUJRERA.GUJARAT.GOV.IN

SCAN FOR
SITE LOCATION



Disclaimer: All the dimensions/Measurements given are unfinished and approximate.
The Photographs & Artistic Impressions are for reference only. Actual Building may vary from the representation mentioned in brochure.

